

# FAIRBANKS SCALES.

THE • STANDARD • OF • THE • WORLD.

• FAIRBANKS, MORSE & CO., •

SEE ADV., PAGE 1861.

ST. LOUIS, MISSOURI.



—SOLE AGENTS FOR—

“JOHN DEERE” PLOWS & CULTIVATORS.

St. Louis, Mo., and Dallas, Tex.

MANSUR & TEBBETTS IMP. CO.,

JOBBER OF

FARM MACHINERY & VEHICLES.



ST. LOUIS ROOFING AND BUILDERS' SUPPLY CO.,



•DEALERS IN•



BUILDING AND ROOFING PAPERS

• COAL TAR AND ASPHALT. •

No. 511 Walnut Street, ST. LOUIS, MISSOURI.

The • Commonwealth • Casualty • Co.,

OF MISSOURI,

WRITES ALL CLASSES OF

PERSONAL ACCIDENT INSURANCE.

Best Plans. . Greatest Security.  
. . . At the Minimum Cost. . .

AGENTS WANTED. WRITE FOR PARTICULARS.

HOME OFFICE:

No. 201 Fagin Bldg., ST. LOUIS.

F. J. PAULY, Sr., President. DR. JAS. McCLURE, Medical Director.  
JOS. L. CURRY, Vice Pres. CHAS. E. SARGENT, Secretary.  
GEO. A. BANNANTINE, Treasurer.

(Page 989, for Annual Statement.)

JACKS & ROBEY, 1801, + PATENT SOLIDATORS, 529 W. WILSON ST. ST. LOUIS, MO.

Run down by Sibam... 1861

MISSOURI

STATE GAZETTEER

AND

BUSINESS DIRECTORY.

1893-94.

VOLUME VIII.

PRICE SIX DOLLARS.

PUBLISHED BIENNIALY BY

R. L. POLK & CO.,

904 OLIVE STREET, - ST. LOUIS, MISSOURI.

PUBLISHERS OF GAZETTEERS AND CITY DIRECTORIES.

For Full List of Publications, see Page 314.

byterian, Southern Methodist and Methodist Episcopal. The schools are, 2 Catholic, 3 public, 6 private. The Lincoln Institute, a normal collegiate and industrial school for the education of the colored people, controlled by a Board of Regents appointed by the Governor, has suitable grounds and buildings, and a thoroughly efficient faculty. A fine State library contains 25,000 volumes, and Lohman's Opera House will seat 800 people. The hotel accommodations are first-class. Four banks transact business here, the First National the Merchant's, J. S. Fleming's and the Exchange. Another thing that speaks well for this thriving city, is the encouragement and support it gives to the press, recognizing its power for

ernment is making extensive improvements for the levee and river. The shipments comprise flour, grain, live stock, mules, horses, brick, fire clay, excelsior, excelsior machines and goods made in the prison. Tel., W. U. and Pacific Mutual. Exp., Pacific and U. S. Population, 8,000. Joseph Stampff, postmaster.

Adler & Sowell (John Adler, Charles Sowell), grocers, 125 E High.  
 Andrae Henry P, notions, 117 E High.  
**Andrae & Bauer** (Henry Andrae, John B Bauer), Livery Stable, 331 E Main.  
 Anthony E L, prin Colored School.  
 Anthony Mrs L C, matron Lincoln Institute.



MISSOURI STATE CAPITOL

J. L. L. ARCHITECT, ST. LOUIS

good and its influence at home and abroad in advertising the progressive character of the population and disseminating intelligence. The journals published here, are the *Tribune* (daily and weekly, Dem), the *Cole County Democrat* (weekly), the *Missouri Volksfreund* (German weekly), and the *Missouri School Journal*, devoted to education. Among the more prominent manufactories, are 2 foundries and machine shops, 2 flour mills, a brewery, a large ice factory, an excelsior factory, the different works carried on in the prison by convict labor, embracing boots and shoes, saddletrees, saddles, harness, whips, blankets, etc. This city became the capital of the State in 1820, and was incorporated in 1839. It has a telephone system, electric light and a splendid system of water works. The gov-

Antweiler John, shoemaker, 312 Madison.  
 Asel Otto & Bro (Otto and Henry), meats, 109 E High.  
 Aubughon Gertrude, milliner, 307 E High.  
**Backers Bros** (Bernard and Herman), Wagonmakers and Blacksmiths, Plow Mfrs and Dealers in Agricultural Impts, Scientific Horseshoeing and General Repair Shop, 713 W Main. (See p 457.)  
 Barclay Shepard, judge Supreme Court of Missouri.  
 Barnes Howard, rest, 214 Madison.  
**Barton Dante**, Lawyer and Sec Cole County Bldg and Loan Assn; Careful Attention to Collections, 304 E High.  
 Bassman Casper, saloon, Jefferson nr Dunklin.  
 Bateman Mrs John, dressmaker, 229 Madison.

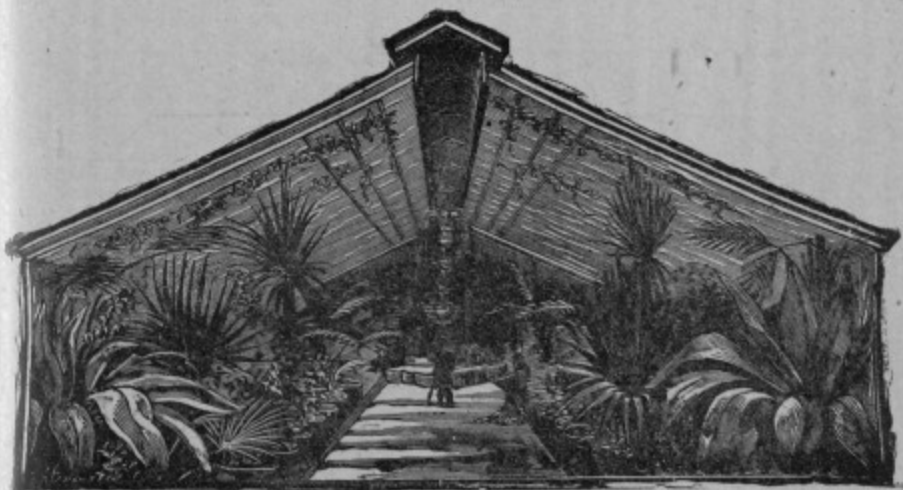
**The H. J. Brunner Hdw. Co.,** BRASS—Hard and Soft Sheet Brass, Brass Rods, Spring Brass Wire, Copper Rods and Wire and German Silver Wire and in Sheet. 820 Walnut St., Kansas City, Mo.



H. BUSCH.

C. PURZNER.

# BUSCH & PURZNER, Capital Greenhouses.



## Florists and Landscape Gardeners.



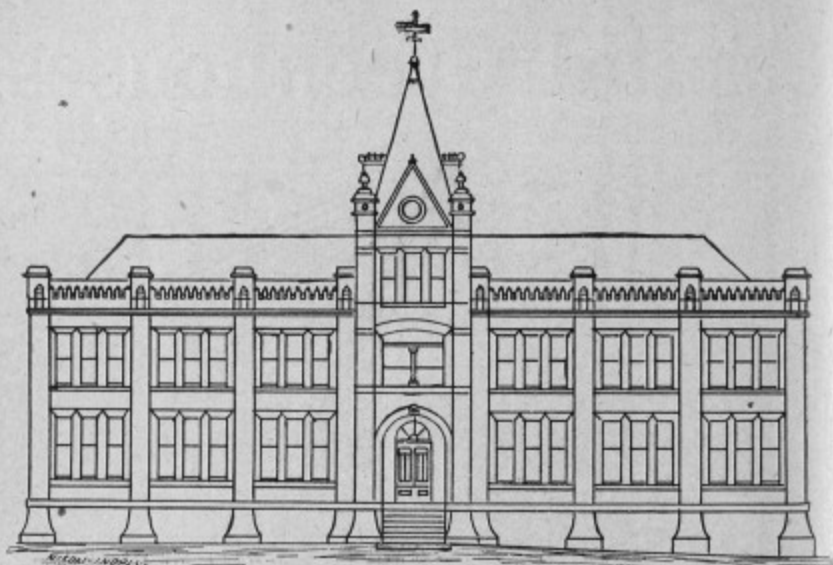
### FLORAL DESIGNS A SPECIALTY.

- All the Latest Designs in Cut Flowers  
for Weddings, Funerals, Etc.
- Churches and Halls Decorated at  
Short Notice.
- Plants and Flowers Packed, Shipped  
and Guaranteed Safe Arrival  
after three days' journey.
- Parks and Residence Grounds Laid  
Out in Artistic Style.
- Plants and Shrubbery Furnished for  
Parks.

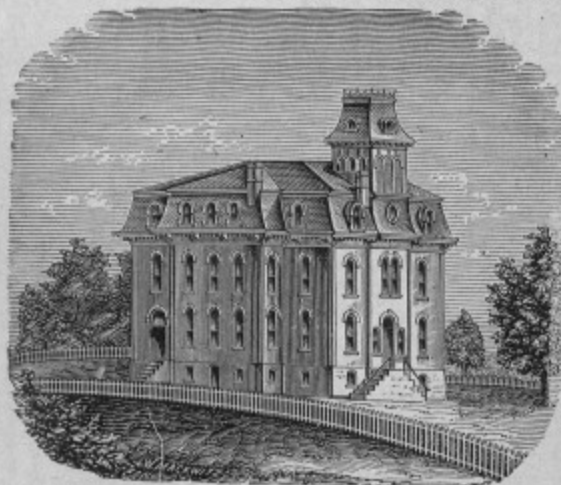
ORDERS SOLICITED.

GREENHOUSES AT  
JEFFERSON CITY, - MISSOURI.

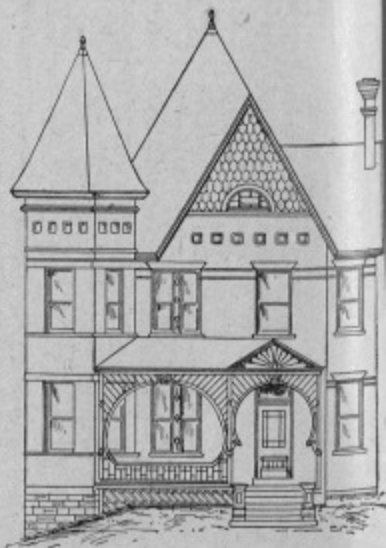
# LINCOLN INSTITUTE.



An Institution supported by the State for the Higher Education  
and Manual Training of the Colored Youth.



Catalogues and further particulars sent Free on  
application. Address



**INMAN E. PAGE, A. M., President, JEFFERSON CITY, MO**

JEFFERSON  
CITY \* \* \*

NURSERIES

(ESTABLISHED 1863.)

**ROBT. GREGG & SON,**  
PROPRIETORS.



Large Fine Line of Nursery Stock now on  
Hand at Lowest Prices.

Correspondence Solicited.

Orders Filled on Short Notice.

Our Catalogues Mailed Free on Application.



**ROBT. GREGG & SON,**

JEFFERSON CITY, COLE COUNTY, MISSOURI.

Jacob Moerschel. Franz Moerschel. Andreas Moerschel.

## MOERSCHEL BROS.,

PROPRIETORS OF

# CAPITOL BREWERY COMPANY,

BREWERS, MALTSTERS and  
BOTTLERS, MANUFACTURERS.

Agents for the Anheuser-Busch Brewing Association.



WHOLESALE

DEALERS IN

ARTIFICIAL **ICE**



THE

**FINEST AND PUREST**

•• **BEER** ••

BREWED IN THE WEST.

Only Best Quality of Hops and Barley Malt Used.  
It is recommended by Physicians for Family use, on account  
of its Purity and Strengthening Qualities.

Patronage Solicited.  
All Orders Promptly  
Attended to.

**JEFFERSON  
CITY,  
MISSOURI**





# MONROE HOUSE,

WM. W. WAGNER, Propr.



Cor. of High and Monroe Sts.,

JEFFERSON CITY, - MISSOURI.

RATES, \$2.00 PER DAY.

Largest and Finest Sample Rooms in the State  
ON FIRST FLOOR.

The only Hotel in the City that has Office, Dining Room, Billiard Hall and Sample Rooms on First Floor.

**ELECTRIC BELLS IN EVERY ROOM,**

And Telephone Connections with all Principal Business Houses in the City.

THE

# Central Hotel,

J. A. HUEGEL, Proprietor.



Corner of High and Jefferson Streets,

**JEFFERSON CITY, - MISSOURI.**Adjoining the New Postoffice and United States District and Circuit Court Houses,  
and within One Block of the State Capitol and Supreme Court House.

Situating in the Center of the Business Portion of the City.

**First-Class in all its Appointments.**

TELEPHONE COMMUNICATION.

Charges Moderate. Special Rates to Parties  
remaining One Week or more.

# WESTERN STEAM BOTTLING WORKS

MANUFACTORY  
OF

Iron

Phostone

AND

Full Moon

Ginger Ale,

AND ALL KINDS OF

Soda and Mineral

WATERS.



**JEFFERSON CITY, MISSOURI.**

BEN G. VIETH.

CHRIS J. MILLER.

# THE CITY HOTEL

CORNER HIGH AND MADISON STREETS,

JEFFERSON CITY,

MISSOURI.

(UNDER NEW MANAGEMENT.)

VIETH & MILLER,

PROPRIETORS.

Telephone communication with all the principal parts of the city, and all other modern conveniences.

Commercial men, especially, will find it to their interest to stop at the "City," its location being the most central and its sample rooms the largest and finest in the city.

The table is supplied with all the delicacies of the season, while at the bar can always be had the rarest old

**WINES, BRANDIES, WHISKIES, CIGARS, Etc.**

TRUSTY PORTERS AT ALL TRAINS.

HENRY J. DULLE, President.

BERNARD DULLE, Vice-President.

JOHN WM. SCHULTE, Secretary and Treasurer.

# Capital Star and Victoria Roller Mills

## G. H. DULLE MILLING CO.,

MANUFACTURERS OF AND WHOLESALE  
AND RETAIL DEALERS IN ALL  
KINDS OF

# FLOUR,

## Meal and Mill Feed.



429 and 431 West Main Street, JEFFERSON CITY, MO.

HIGHEST MARKET PRICE PAID FOR GRAIN.

H. W. EWING, President.

J. H. EDWARDS, Secretary.

A. C. SHOUP, Business Manager

# Jefferson City Tribune.

THE OFFICIAL PAPER OF THE STATE.

JEFFERSON CITY, MISSOURI.

The reasons why you should subscribe for **THE TRIBUNE** are:

1. It is the *only* Paper in the State that publishes the Supreme Court Docket. It will also publish that of the Kansas City Court of Appeals.
2. It is the *only* Paper in the State whose reports of proceedings in the Supreme Court are *absolutely* correct, being a *verbatim* copy from the minute book of the Clerk.
3. It is the *only* paper in the State that publishes *in full* all opinions in *important* cases, and all opinions deciding *new* legal questions as soon as delivered. **THE TRIBUNE** will publish *any* opinion of the Supreme Court at the request of a Subscriber.
4. It is the *only* Paper in the State that publishes *in full* the proceedings of the Legislature as written by the Official Reporter of that body.
5. It is the *only* Paper in the State that publishes the stray list.
6. It is the *only* Paper in the State that publishes the Proclamations of the Governor offering rewards for the capture of fugitives from justice.
7. **THE TRIBUNE** will give a full and reliable report of all public business transacted in the various departments of the State Government.

The subscription price is but **\$1.00** per year.

**THE TRIBUNE PRINTING Co.** are the State Printers and Binders, and have every facility for doing all classes of Printing and Binding. Printing of Briefs, Abstracts of Record and Transcripts a Specialty.

**Eaton T W**, Genl Agent Des Moines Life Assn for Eastern Mo. (See p 89)

**Edwards Joseph R**, propr Cole County Democrat, and Lawyer, 300 E High.

**Edwards J H**, sec Tribune Printing Co.

**Edwards Wm J**, asst editor Cole County Democrat.

**Edwards & Davison** (Joseph R Edwards, Wm S Davison), lawyers, 390 E High.

**Ehler Paul F**, wagonmaker, W Main.

**Ellis Edward G**, dentist, 101 W High.

**Elmer Adolph W**, architect, 306 E High.

**Elston Addison**, physician, 500 E Main.

**Enloe Isaac N**, physician, 330 E High.

**Eveler John**, contractor 415 W High.

**Ewing Henry C**, Pres Exchange Bank, and Lawyer, 202 E High.

**Ewing H W**, pres Tribune Printing Co.

**Exchange Bank of Jefferson City** (Capital \$22,700, Surplus \$32,700), H Clay Ewing Pres, W Q Dallmeyer Cash, W A Dallmeyer Asst Cash. Your Collections Solicited, 204 E High. (See adv in Bankers' Dept.)

**Falk Henry**, confectioner, 216 Water.

**Ferguson & Mayer** (Alfred S Ferguson, Edward Mayer), printers, 232 E High.

**First National Bank** (Capital \$50,000, Surplus \$50,000), Jesse W Henry Pres, John G Schott Vice-Pres, Oscar G Burch Cash, 130 E High.

**Fischer Gus A**, drugs, 105 E High.

**Fisher Jacob C**, Propr State Republican, and Lawyer, 200 E High.

**Fitzpatrick John F**, bksmith, 310 Broadway.

**Flanagan Mrs Martha L**, music teacher, 306 Adams.

**Fleming Joseph S**, banker, 122 E High.

**Flick Joseph**, shoemaker, 210 Madison.

**Flores A W**, Chief Clerk Dept of Education, Capitol bldg.

**Fowler Green C**, county surveyor.

**Franklin Fire Insurance Co of Philadelphia**, Pa. O G Burch agt, 130 E High.

**Friday Missouri Clothing House**, John Friday mngr, 201 High.

**Friemel & Langerhaus** (Ernest Friemel, Christ Langerhaus), saloon, 130 W High.

**Fromme Frank J**, sheriff Cole county.

**Gantt J B**, judge Supreme Court.

**Garman John E**, public administrator.

**Gass Howard A**, propr Missouri School Journal, Capitol bldg.

**Geigel John F**, restaurant, 214 E High.

**Geisberg Henry C**, clk U S court, P O bldg.

**Gerber August**, cigar mnfr, Walnut.

**Germania Club**, H F Priemeyer pres, August J Bauer sec.

**Giesecke Boot and Shoe Mnfgr Co**, W F Giesecke pres, Wm Doench Jr sec, factory State prison.

**Globe Shoe and Clothing House** The, Charles Czarlinsky Mngr, J Siegfried Propr, 127 E High. (See p 455.)

**Goetz Francis W**, general store, 630 W Main.

**Goetz Joseph E**, cigar mnfr, 135 W High.

**Goldman Mrs Minnie**, clothing, 211 E High.

**Goldstein Maurice**, Merchant Tailor; Perfect Fit Guaranteed, 125 E High. (See p 454.)

**Gordon George W**, grocer, 306 E High.

**Gordon John W**, live stock, cor Harrison and Main.

**Gordon Miss Zou**, school teacher.

**Gray Mrs Louis**, propr Nichols Hotel, 108 W High.

**Gray Mary E**, dressmaker, 117 E High.

**Greene John R**, clerk Supreme Court of Mo.

**Gregg Robert & Son** (Robert and John), Proprs Jefferson City Nurseries, 1 Mile e of City. (See p 445.)

**Griesel Emil**, blacksmith, cor Dunklin and Jefferson.

**Grieshammer N & Co** (Nicholas and John W Grieshammer), billiards, 107 E High.

**Grimshaw Arthur P**, Mayor and Agent for U S and Pacific Express Cos and Chicago & Alton R R Co, Merchants' Bank Bldg, 108 W High.

**Guffy Clark**, dairy, 314 Lafayette.

**Gundelfinger Daniel**, hardware, 123 E High.

**Guyot J & Son** (Albert Guyot), jewelers, 218 E High.

**Hammen Albert E**, dentist, 208 E High.

**Hampton Thomas M**, grocer, 305 Lafayette.

**Hansen Herman C**, shoes, 128 E High.

**Harding Gen James**, Sec Board Railroad and Warehouse Commissioners, State Capitol.

**Harlan Miss Alma**, teacher Merchants' Bank bldg.

**Harlan Wm B**, laundry, 222 Madison.

**Harris H L**, Professor Natural Science Lincoln Institute.

**Heldt Wm**, barber, 705 W Main.

**Heim Abraham**, clothing, 131 E High.

**Heinrichs John F**, undertaker, cor High and Monroe.

**Heinrichs Joseph**, barber, 113 E High.

**Heinrichs M F**, furniture.

**Hemmel John H**, grocer, 115 E High.

**Henderson Joseph J**, city marshal.

**Hennessey Timothy H**, Chairman Board Railroad and Warehouse Commissioners, State Capitol.

**Henry Excelsior Co** (Incorporated), Lawrence Wagner Pres, Frederick Truetzel Vice-Pres, G E Lohman Sec and Treas, Mfrs of All Grades of Excelsior for Upholsterers, Mattress and Packing Purposes, cor Mulberry and Water. (See p 452.)

**Henry Jesse W**, Wholesale and Retail Grocer, 114 E High.

**Hess Charles**, coal and lime, 400 W Main.

**Hickman Henry W**, railroad and warehouse commissioner, State Capitol.

**Hoersch Frank**, saloon, 111 E High.

**Hoffar George P**, laundry, 157 W Main.

**Hogg Edwin R**, lumber, 123 E High.

**Hollarah Henry**, county judge (1st District).

**Hollis A P**, Professor of Language and History, Lincoln Institute.

**Holtzschneider Edward**, lumber, 113 E Main.

**Hoog Rev Otto J S** (Catholic), Broadway.

**Hope George**, tailor, 203 E High.

**Hough Arthur M**, lawyer, 202 E High.

**Huback John**, vet surgeon, 705 Jefferson.

**Huegel Joseph A**, Propr The Central Hotel, cor High and Jefferson. (See p 448.)

**Jefferson City Brick Co** (Capital, \$7,000), Henry Clay Ewing Pres, Jacob Tanner Vice-Pres, Clemens W Wallendorf Sec and Treas, 200 E High.

**Jefferson City Building & Loan Association** (Capital, \$400,000), Frederick H Binder Pres, Oscar G Burch Treas, C W Wallendorf Sec, 200 E High.

**Jefferson City Cornet Band**, Theodore H Haar leader, cor High and Washington.

**Jefferson City Light, Heat & Power Co**, Wm W Wagner pres, Charles E Hess sec and supt, cor Washington and High.

**Jefferson City Nurseries** (Established 1833), Robert Gregg & Son Proprs, 1 mile e of city. (See p 445.)

**Jefferson City Singer Society**, F J Boeinger leader.

**CHARLES MILLER & SON.** Inventors, Patentes and Owners of the AUTOMATIC SELF-OILING PIPE CUTTER and SELF-ADJUSTING PIPE WRENCH, State Rights for Sale! Hold! Capitalists! You will find a lucrative investment in these inventions, as they can be manufactured cheaply. They have no rival. They had scarcely been introduced when they received the highest reputation. Send for further information and highest testimonials. Washington, Mo.

**FREDERICK H. BACON**, Attorney and Counselor-at-Law,  
 509 Olive Street, ST. LOUIS, MO. Counsel for A. O. U. W., Knights of Honor, American  
 Legion of Honor, and other Fraternities. CORPORATION and INSURANCE LAW, Specialties.

452

JEF MISSOURI STATE GAZETTEER JEF

**Jefferson City Tribune**, Tribune Print-  
 ing Co Proprs, 217-219 Madison. (See p 450.)  
**Jefferson City Water Works Co**, Frederick H  
 Binder pres, W A Dallmeyer sec, 132 E  
 High.  
**Jefferson Shoe Co** Tho, C M Henderson pres,  
 L C Parker sec, State Prison.  
**Johnston Rev J T M** (Baptist), Monroe near  
 Main.  
**Kaufman Frederick**, jeweler, McCarty.

**Kaufman John**, saw mill, s of city limits.  
**Keeran Wesley**, justice of peace.  
**Kerr James A**, physician, E High.  
**Kielman Andrew**, barber, 204 Madison.  
**Knaup & Zuendt** (Fred Knaup, Adalbert  
 Zuendt), Proprs City Shoe Store, Madison.  
**Koehler Maggie E**, dressmaker, 221 E Main.  
**Koehler Miss Lou**, dressmaker, 136 E High.  
**Kohler Frederick**, carpet weaver, 410 E High.  
**Kolkmeier Hermann**, gen store, 229 Mulberry.

LAWRENCE WAGNER, Pres.

FRED TRUETZEL, Vice-Pres.

G. E. LOHMAN, Sec. and Treas.

## Henry Excelsior Company,

(CORPORATION.)

CAPITAL, \$10,000.00, PAID UP.

MANUFACTURERS OF ALL GRADES OF

# EXCELSIOR

FOR UPHOLSTERERS, MATTRESS AND PACKING PURPOSES.

Cash Paid for Linn and Cottonwood  
 TIMBER.

JEFFERSON CITY,

MISSOURI.

*Will Murphy* Photographer

AND

Crayon Artist.

I am now prepared to furnish the finest work in Pastel,  
 Crayon, India Ink and Water Color

PORTRAITS

At Very Moderate Prices.

Correspondence and Patronage Solicited and Satisfaction Guaranteed.

Fleming Bank Building, 126 E. High St.,

JEFFERSON CITY, MISSOURI



Statuary and Sculpturing **GEO. H. NORMAN & CO.,** 2500 Cass Ave.,  
 FINELY EXECUTED BY St. Louis, Mo. (See Page 99.)

CONSUMERS' MERCANTILE AGENCY. Information obtained from all Points.  
 Special Investigations by paid Correspondents.  
 MERMOD-JACCARD BUILDING, ST. LOUIS, MO.

# JACOB SCHMIDT,

WHOLESALE DEALER  
IN THE CELEBRATED

## WM. J. LEMP'S



St. Louis.  
BREWERS OF THE WORLD RENOWNED  
**STANDARD LAGER,**  
**GULMBACHER, EXTRA EXPORT,**  
**EXTRA PALE.**



# Draught AND Bottled Beer.



And Wholesale and Retail  
Dealer in

# ICE

Orders solicited and  
promptly attended to.

219 E. High Street,  
JEFFERSON CITY,  
MISSOURI.



# All Kinds OF SIGN WORK EXECUTED ARTISTICALLY.

Brilliant Sign and Novelty Co., 800 Pine Street, ST. LOUIS, MO.

454

JEF MISSOURI STATE GAZETTEER JEF

ST. LOUIS, CHICAGO, NEW YORK, ST. PAUL, KANSAS CITY and PORTLAND, OREGON.

Kolkmeier John, stone, cor McCarty and Mulberry.  
 Korn Mrs Yetta, dressmaker, 125 E High.  
 Kormsmeier C A, grocer, 2 W Dunklin.  
 Krueger Wm, carpenter, Broadway.  
 Kruger Otto J, agent Waters Pierce Oil Co, Atchison.  
 Langerhans Charles, shoemaker, 219 E High.  
 Lansdown Mrs E T, boarding house, 418 Madison.  
 Lartoneix Henry J, stationery, 206 E High.  
 Leonard Miss Mattie, teacher col'd school.  
 Le Page Mrs Elizabeth, boarding house, 133 W High.  
 La Page Louis, plasterer, Ash opp cemetery.  
 Leslie John G, comr of public schools.  
**Lesueur Alexander A**, Sec of State, State Capitol.  
**Lewis Charles R Clothing Mfg Co**, Charles R Lewis Pres. H Logan Vice-Pres. John G Lewis Sec and Treas, Mnfrs of Jeans, Pants, Overalls, Shirts, General Clothing, and Dealers in Staple Dry Goods and Fine Gloves. (See opp classified Dry Goods.)  
**Lewis John G**, Sec C R Lewis Clothing Mfg Co and Sec Jefferson City Club.  
**Lincoln Institute** (Normal), Jesse W Henry Pres Board of Regents, Thomas I Goddin Vice-Pres, Oscar G Burch Sec, A Brandenberger Treas, Inman E Page, A M, Principal, s e cor Ashley and Cherry. (See p 444.)  
**Linhardt John A**, Fancy and Staple Groceries, Provisions and Crockery, 235 E High.

**Linhardt J A & Co** (John A Linhardt, George J Peninger) Livery, Feed and Boarding Stables, Jefferson bet High and McCarty. (See p 457.)  
**Loethen & Nilges** (Peter H Loethen, Theodor G Nilges), Engineers and Contractors; Steam and Hot Water Heating, Ventilating, Lighting and Power Plants, 801 Jefferson. (See p 459.)  
**Lohman Louis C**, Wholesale Groceries and Hardware, Dry Goods, Queensware, Plows, Wagon Timber, Boots and Shoes, Paints, Oils, Leather, Salt and Cement, Etc. The Very Best Quality Guaranteed; Also Propr Lohman's Opera House, 103 E High. (See p 440.)  
**Lohman's Opera House**, L C Lohman Propr. (See p 440.)  
**Love J L, A B**, Prof of Mathematics Lincoln Institute.  
 Lucas Frank, cigar mnfr, 234 Madison.  
**Luckett Fenton E**, Prosecuting Attorney Cole County, 300 E High.  
**Luecke Wm**, Experienced Blacksmith and Scientific Horseshoer; None but the Best Workmen Employed; Repairing a Specialty, Monroe bet High and McCarty.  
 Lusk Wm H, circuit clerk.  
 Lutz George, feather renovator, 130 E Main.  
 McCarty House, Mrs Ella McCarty propr, cor McCarty and Madison.  
 McCasland Cleo O, music teacher, 309 Monroe.  
 McHenry Houck, express, 313 Jefferson.  
 McHenry James E, city clerk.  
**McIntyre Daniel H**, Pres Merchants' Bank and Attorney-at-Law, 101 W High.

## ANTON NATSCH,

(SUCCESSOR TO H. NEEF.)

DEALER IN

## STOVES, TINWARE,

Metal Roofing, Guttering, Lighting Rods, Etc.

ALL REPAIRING NEATLY DONE.

403 W. Main St., JEFFERSON CITY, MO.



The Best Lightning Rod in the Market a Specialty, put up at Low Prices and Guaranteed.

## MAURICE GOLDSTEIN, MERCHANT TAILOR.



Cleaning, Dyeing, Scouring and Repairing.

All Work First-Class, and Satisfaction Guaranteed. Your Patronage Solicited.

125 E. High St., Jefferson City, Mo.

## OLD AND TRIED SINCE 1855.

Oldest established Insurance Agency in Central Missouri. Only first-class insurance companies represented.

F. W. ROER,  
Fire, Life and Tornado

## INSURANCE.

216 MADISON STREET,  
JEFFERSON CITY, MISSOURI.

A Dollar Saved IS A DOLLAR MADE. WHERE? AT WM. B. KLEIN'S, Stair Builder, 216-218 SOULARD STREET, ST. LOUIS, MO.



**A. J. BAUER,**  
**GENERAL INSURANCE.**

**FIRE, LIFE, TORNADO, ACCIDENT, CASUALTY, ETC.**

REAL ESTATE AND COLLECTION AGENT.

All Orders will Receive Prompt Attention.

NOTARY PUBLIC.

132 E. High St., JEFFERSON CITY, MO.

**SCHOTT'S + ARTESIAN + WELL,**  
JOHN G. SCHOTT, Proprietor.

No. 223 E. High Street, - JEFFERSON CITY, MISSOURI.

This Artesian Well is 1,365 feet deep, and has standing Mineral Water of a depth of 1,305 feet. The water is drawn from a depth of 1,345 feet, and contains the following medicinal properties, as ascertained by Mr. A. Brandenberger, Chemist, of this city.

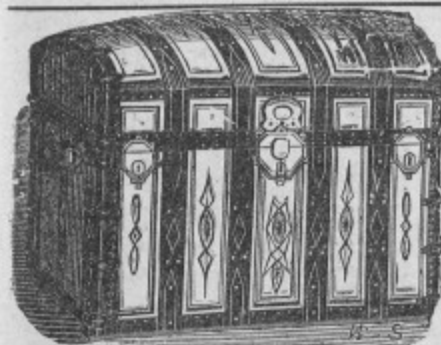
ANALYSIS :

In one Gallon or 231 cubic inches of water from John G. Schott's well, I found :

Sodium Chloride.....	229.184 grains.	Silica.....	5.840 grains.
Calcium Sulphate.....	46.760 "	Alumina.....	a trace.
Sodium Bicarbonate.....	21.060 "		
Magnesia Bicarbonate.....	74.861 "	Total solid contents.....	446.855 grains.
Calcium Bicarbonate.....	68.650 "	Temperature, 68° F.	

☞ This water was taken from the well when it was 1,345 feet deep.

A. BRANDENBERGER, Ch. G.



**GLOBE** Shoe and  
Clothing House,  
No. 127 East High Street,  
JEFFERSON CITY, MISSOURI.

Headquarters for Genuine Bargains in  
Boots and Shoes, Clothing,  
Ladies' and Gents' Furnishing Goods,  
Hats and Caps, Blankets,  
Quilts, Trunks and Valises.

☞ By giving us a call you will surely save money.

J. SIEGFRIED, Proprietor.

C. CZARLINSKY, Manager.

F. KNAUP, Pres. FRED. PRIESMEYER, Secretary and Mng'r. ADELBERT ZUENDT, Treas.

**STANDARD SHOE CO.,**

MANUFACTURERS OF

Ladies', Misses' and Children's,  
and Men's, Boys' and Youths' **Fine Shoes**

UPPER MANUFACTORY AND SALESROOM :

201 to 207 Main St., - JEFFERSON CITY, MO.

**Safe Investments.** NATIONAL LOAN AND INVESTMENT ASSOCIATION, Capital, \$5,000,000  
SPRINGFIELD, MO.

# Excelsior Laundry.

INDIVIDUALS AND CLUBS SHOULD WRITE US FOR  
TERMS, COLLARS AND CUFFS SUPERBLY DONE.  
606 Olive St., ST. LOUIS, MISSOURI.

of ST. LOUIS, MO. Cash Capital, \$250,000. Net Surplus, \$100,000.  
HUFF, SMITH & HALL, General Agents, 218-221 Walnut  
Building, St. Louis, Mo. CASUALTY INSURANCE in all its forms.

## Union Casualty and Surety Company,

McKenzie Miss Ella, dressmaker, 215 E Main.  
MacFarlane George B, judge Supreme Court.  
**Madison House**, Edward J Miller Propr, cor Madison and Main.

**Magee W A**, Supt Industrial Dept Lincoln Institute.

Mahan Aurelius A, county assessor.

Mahan Thomas B, county collector.

Mars Mrs Wm, hair goods, 219 E High.

Martin Mrs Mattie, dressmaker, 123 McCarty.

Martinek Mrs Frank, dressmkr, 222 E High.

Maus Charles B, general store, 101 E High.

Maus George M, mattress mnfr, 304 E High.

Mayens Jacob, general store, 210 E High.

Mayer Mrs Caroline, stoves, 216 E High.

Meier John, gardener, Jefferson.

### Merchants' Bank of Jefferson City

The (Capital, \$50,000), Daniel H McIntyre

Pres, M R Sinks Vice-Pres, J H Diercks

Cash, John T Clarke Asst Cash, Safety Deposit

Boxes, 101 W High.

Merchants' Fire Insurance Co of Newark, N J,

O G Burch agent, 130 E High.

Miller Charles F, bill poster, 100 E High.

**Miller Edward J**, Propr Madison House,

cor Madison and Main.

Miller F B, architect, 101 W High.

**Miller P T**, Bookkeeper State Treasurer's

Office, Capitol Building.

Miller Philip T Jr, dentist, 126 E High.

Missouri Central Building and Loan Assn,

John M Oldham pres, Mary C Faust sec, 304

E High.

Missouri Pacific R R, John J Church agent, E

Water and Monroe.

Missouri School Journal, Howard A Gass

propr, Capitol bldg.

**Missouri State Penitentiary**, Hon

James L Pace Warden, Wm H Bradbury

Deputy Warden, James H Chinn Chief

Clerk, R H Berryman Bookkeeper, Wm R

Belt Usher and Mail Clerk, Jesse B Tolin

Yardmaster.

Missouri Volksfreund, Albert Kroeger publr,

315 Madison.

Missouri & Kansas Telephone Co, Robert Mc-

Cauley mngr, 202 E High.

Mitchell Jacob, notions, 214 E High.

### Muerschel Bros (Jacob, Franz and And-

reas) (Successors to C & L Wagner), Proprs

of Capitol Brewery Co, Brewers, Maltsters,

Bottlers and Mnfrs of Pure Artesian Ice;

Also Agents for Anheuser-Busch Brewing

Association, Dunklin. (See p 446.)

Monnig Hugo, books, 225 Madison.

**Monroe House**, Wm W Wagner Propr,

cor High and Monroe. (See p 447.)

Moore Meredith T, propr Capital City Ferry

Co, 111 W High.

Moore Mrs M H, boarding house, 111 W High.

Moore S P, oil, Madison nr High.

Moore Wm, livery, cor Jefferson and McCarty.

Morlock Wm H, general store, 631 Jefferson.

Morris Wm D, dentist, 126 E High.

Morrow R C, stenogr State Department.

**Murphy Wm R**, Photographer and Port-

rait Artist; Finest Work to the Trade in

Pastel, Crayon, India Ink and Water Color

Portraits, 126 E High. (See p 452.)

**Natsch Anton**, Stoves, Tinware, Metal

Roofing, Guttering, Lightning Rods, 403 W

Main. (See p 454.)

Neef's House, Mrs Herman Neef propr, 105 W

High.

Nichols Hotel, Mrs Louis Gray propr, 108 W

High.

Nitchy Mrs Henry C, mlliner, 116 E High.

Noland S C, marshal Supreme Court.

Nordmann Henry, grocer, 110 Jefferson.

North Rev (Methodist), Main.

North British and Mercantile Fire Ins Co of

England, O G Burch agent, 120 E High.

Notre Dame Academy, Sister Illidia superior,

cor Broadway and High.

Oldham John M, county coroner.

**Opel A & Co** (Adam and Charles Opel,

Herman W Jens), Architects and Con-

tractors for Stone and Wood Buildings; also

Planing, Hardwood Work, Plastering and

Dealers in Hardwood Lumber; Agents for

Harman Steel Picket Fence, which is Cheap-

er than Wood; Plans and Specifications for

Residences and other Buildings Furnished

upon Application, 213 Madison.

**Orear Edward T**, Chief Clerk State Treas-

urer's Office.

**Orient Fire Insurance Co**, John H

Diercks Agent, 101 W High.

**Osage Ice Co**, H Clay Ewing Pres, H A

Swift Mngr, 202 E High.

Oster Henry, bricklayer, 311 W Dunklin.

Ott Philipp, lumber, cor Jefferson and Main.

**Pace Hon James L**, Warden Missouri

State Penitentiary.

Pacific Express Co, A P Grimshaw agt, 103 W

High.

**Pacific House**, Philipp Schmidt Propr.

This House is Situated Convenient to Com-

mercial and other Business Men; First-Class

in all its Departments; Rates very Reason-

able, opp Mo Pacific R R Depot.

**Page Inman E, A M**, Principal Lincoln

Institute and Professor of Metaphysics and

School of Economy.

Payne Wm B, justice of peace.

Peasner George W, saloon, 129 E High.

Perkins Wm E, shoemaker, 214 E High.

Pohl B H & Sons (Bernard H and Bernard

H Jr), brick yard, cor Harrison and W Main

Pope George, saloon, 222 Madison.

Pope Winfield S, lawyer, 103 W High.

Porth George, jeweler, 210 E High.

Port Joseph P, physician, 633 W Main,

Postal Tel-Cable Co, C H Schirmer mngr,

225 Madison.

Pratt C A, restaurant, Mo Pac Depot.

Price John, painter, 308 Madison.

Priesmeyer August, shoe mnfr, State Prison.

Purmer Rev C (Evangelical Lutheran), cor

Monroe and McCarty.

Rackers & Miller, threshers, e of limits.

Raithel Adam, meats, 233 E High.

Raithel John, meats, 215 E High.

Raithel John P, saloon, 702 W Main.

Ramsey Bros (George and James), ties and

posts, Ashley.

Ramsey Miss Josephine, tchr colored school

Rawson Albert K, harness, Jefferson.

Reid James W, laundry, 201 Broadway.

Rephio Frank H, general store, 501 W Main.

Rexroth Christian, vet surgeon, 230 Madison.

Rhodes Miss Edith, stenographer, 200 E High.

Robinson Mrs George F, mlliner, 106 E High.

**Roer Francis W**, Old and Tried Since

1855; Oldest Established Insurance Agency

in Central Missouri; Only First-class Com-

panies Represented; Fire, Life and Tornado

Insurance; Also County Clerk, 216-218

Madison opp Tribune Bldg and at Court House.

(See p 454.)

**Roesen Wm F**, Propr Western Steam

Bottling Works; Mnfr of Iron Postone and

Full Moon Ginger Ale and All Kinds of Soda

and Mineral Waters; Works Located at

Dunklin and Jefferson. (See p 449.)

Rommel Frederick, books, etc, 118 E High.

Ross John N, painter, 311 Madison.

Routzong Adam, notary, 224 Madison.

# SUPERIOR VARNISH. LOUIS G. HOFFMANN VARNISH MFG. CO., 2720 to 2726 De Kalb St., St. Louis, Mo.



**BACKERS BROTHERS,**  
 Dealers in Agricultural Implements  
 and Manufacturers of  
**Wagons, Buggies and Carriages.**

Blacksmithing of all Kinds Executed  
 in the Most Workmanlike Manner.  
 Repairing of all Kinds of Machinery. Scientific  
 Horseshoeing a Specialty.  
 713 West Main Street,  
**JEFFERSON CITY, MISSOURI.**

**H. A. SWIFT ICE CO.**

Wholesale  
 —AND—  
 Retail  
 DEALER IN  
**ICE.**

—OFFICE IN—  
 Schmidt Building,  
 112 East High St.,  
**JEFFERSON CITY, MISSOURI.**



**John A. Linhardt & Co.**  
**FIRST-CLASS RIGS**  
 At Shortest Notice furnished to  
 the  
**TRAVELING PUBLIC.**

Commercial Trade Solicited.  
 Careful Drivers.  
 Our Prices are Low.  
 Stables: Jefferson St.,  
 bet. High and McCarty.  
 Office at Linhardt's Store.  
 Telephone connection to all parts  
 of the city.



**JEFFERSON CITY, MISSOURI.**

**VICTOR ZUBER,**

DEALER IN AND MANUFACTURER OF

**Marble and Granite**  
**MONUMENTS AND HEADSTONES,**

And Dealer in GLAZED SEWER PIPE.

Adjoining Merchants' Bank, Jefferson St.,

**JEFFERSON CITY, MO.**



**CAMPHO-PHENIQUE SOAP,** For Toilet and Medicinal Use.  
 —ABSOLUTELY PURE. TRY IT.—  
 Of all Druggists. Price, 25 cts. per Cake.

# Burroughs Registering Accountant.

No large Counting House should be without it. It ensures Neatness, Accuracy and Dispatch. Sole Agents Commercial Adding Machine Co. Commercial Building, ST. LOUIS, MO.

458

JEF

MISSOURI STATE GAZETTEER

JEF

Write for Estimates to  
Seymour-Schulze Cornice Co.,  
8-10 S. Jefferson Ave., St. Louis.

Rutledge J M, assistant professor mathematics Lincoln Institute.  
Sarnan Henry F, cigar mnfr, 303 E High.  
Schell Simon N, county judge.  
Schiele Maurice, saloon, 104 E High.  
Schirmer Charles H, mngr Postal Tel-Cable Co, 225 Madison.  
Schleer Ferdinand, hardware, 108 E High.  
Schlueter B D, justice of peace.  
Schmidt Henry, harness, 222 E High.  
**Schmidt Jacob**, Wholesale Dealer in W J Lemp's Draught and Bottled Beer and Wholesale and Retail Dealer in Ice, 219 E High. (See p 458.)  
Schmidt J & J C (John and John C), harness, 217 E High.  
Schmidt Paul, blacksmith, 308 Jefferson.  
**Schmidt Philipp**, Propr Pacific House and Saloon, cor Water and Monroe opp M P R R Depot.  
Schneider Henry, carpenter, Jefferson.  
Schneider Rev J U (German Evangelical), Washington.  
Schmid Henry, carpenter.  
**Schott John G**, Vice-Pres First National Bank; Propr of Artesian Well 1365 Feet Deep; Also Saloon, 121 E High. (See p 455.)  
Schramm Frank, shoemaker, E Dunklin.  
Schuhr Charles R, tailor, 305 Madison.  
**Schulte John Wm**, Sec and Treas G H Dulle Milling Co.  
Schultz Dry Goods and Carpet Co, Herman E  
Schultz pres, Wm Woodrum sec, 131 E High.  
Schultz Theodore E, grocer, 235 E High.  
**Schumann Henry**, House Painter and Decorative Paper Hanger, 201 Madison. (See opp.)  
Schwartz Conrad, cigar mnfr, 212 Madison.  
Schwartz George J, blacksmith, cor Madison and McCarty.  
Schwind Rev Wm (German Methodist), cor Elm and Broadway.  
**Seibert James M**, State Auditor.  
Sessinghaus Frederick E, carpenter, alley near Jefferson and 4th.  
Shackleford Dorsey W, circuit judge, 14th district.  
Sherwood Thomas A, judge Supreme Court.  
Shockley & Ruthven (Andrew J Shockley, John P Ruthven), hardware, 110 E High.  
Short John W, carpenter, Fairview.  
**Shoup A C**, Mngr Tribune Printing Co.  
**Siegfried J**, of St Louis, Mo, Propr The Globe Shoe and Clothing House, 127 E High. (See p 455.)  
Silver & Brown (Edwin Silver, F M Brown), lawyers, 204 E High.  
**Simonsen-Walter Mfg Co**, Founders, Engineers and Machinists; Manufacturers of the Famous Excelsior Cutting Machine; Mill and Mining Machinery, Iron Work for Buildings, Steam Heating and Ventilating Plants; Dealers in Engines, Boilers, Machinery and Supplies; Repairing of Machinery a Specialty, W Water, bet Jefferson and Washington. (See opp classified Excelsior Mnfra.)  
Sink Marcus R, grocer, 126 E High.  
Smith John, street commr, 125 W High.  
Smith Wm, mach, Monroe, bet High and McCarty.  
**Spaunhorst Charles G**, Wagonmaker, Carriages and Buggies Repaired, Monroe, bet W High and McCarty.  
Steats Charles, painter, Main, near Jefferson.  
Steahr Emil E, barber, 229 E High.  
Stampfl Joseph, furniture, 223 Madison.

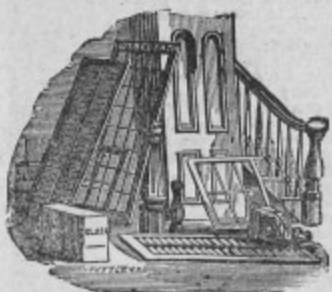
**Standard Shoe Co** (Capital, \$60,000, Paid Up), Frederick Knaup Pres, Adelbert Zuendt Treas, Fred Priesmeyer Sec and Mngr, Mnfers of Fine Shoes, 201 to 207 E Main. (See p 455.)  
**State Library**, J W Zevely Librarian, Supreme Court Bldg.  
**State Republican The**, Jacob C Fisher Propr; Large Circulation; Splendid Advertising Medium, 202 E High.  
**Stephens Lon V**, State Treasurer, State Capitol.  
Stewart Alexander, steam boat owner.  
Stewart Edward W, chiropodist, 311 Madison.  
Stewart Mrs Sarah S, grocer, 700 E High.  
**Stone Hon Wm J**, Governor of Missouri, Capitol Bldg.  
Straub Wendell, cigar mnfr, 135 E High.  
Straus Jacob Saddlery Co, Jacob Straus pres, Adolph Sandheimer sec, factory in State Prison.  
Suden F Gustav, photographer, 208 E High.  
Sullivan J S Saddlery Co (John S Sullivan, James M Hays), factory in State Prison.  
**Swift H A Ice Co**, Horace A Swift Pres and Treas, A D Swift Sec, Wholesale and Retail Dealers in Ice, 112 E High. (See p 457.)  
**Tainter George W Jr**, Graduate Surgeon-Dentist; Gold Work a Specialty; Prices Reasonable, and All Work Guaranteed as Represented, 101 W High.  
Tanner Jacob, general store, cor Dunklin and Jefferson.  
Tanner Theodore, machinist, Jefferson bet Dunklin and Ashley.  
Taylor James R, county judge.  
Thomas Allen, barber, 218 Madison.  
Thomas Charles W, grocer, 200 E High.  
Thomas Christina, dressmaker, 122 W High.  
Thompson Charles A, physician, 117 Madison.  
Thornton Mrs Wm, boarding house, 107 E Main.  
Thorp Jefferson L, physician, 122 W High.  
**Tribune Printing Co**, H W Ewing Pres, J H Edwards Sec, A C Shoup Business Mngr, Proprs Jefferson City Tribune, 217-219 Madison. (See p 450.)  
Truleib Mrs Sophie, midwife, 515 Madison.  
Tuckley Richard S, barber, 137 E High.  
United States Express Co, Arthur P Grimshaw agent, 103 W High.  
Vaughan Mrs G J, sew machines, Mulberry.  
**Venzy D B** (of Hillsboro, Mo), Regent Lincoln Institute.  
**Victoria Roller Mills**, G H Dulle Milling Co Proprs, 223 W Main. (See p 450.)  
**Vieth & Miller** (Ben G Vieth, Chris J Miller), Proprs City Hotel and Annex Saloon, n e cor High and Madison. (See p 449.)  
Vogt John, tailor, 112 E High.  
Volker Robert J, mngr W U Tel Co, 216 Madison.  
Wagner George, justice, 101 W High.  
**Wagner Henry**, Propr Butchers and Drivers' Exchange; in this Saloon are Kept the Finest Wines, Liquors and Cigars, 221 E High.  
**Wagner Wm W**, Propr Monroe House and Pres Jefferson City Light, Heat and Power Co, cor High and Monroe. (See p 447.)  
Waldecker Conrad, city atty, Court House.  
Walker John G, drugs, 202 E High.  
Walker Robert F, attorney general, Supreme Court bldg.  
**Wallau Henry J**, Propr Capital City Planting Mills; Mnf of Sash, Doors, Blinds, Building Material, Etc; also Carpenter, Contractor and Builder, Jefferson bet Main and Water. (See opp.)

**ST. LOUIS IRON AND MACHINE WORKS**, Builders of General Heavy Machinery and Castings. Corner 2d and Chouteau Ave., St. Louis, Mo.

WM. & H. A. LINGENBRINK,  
Agents, 508 Commercial Bldg.,  
ST. LOUIS, - - MISSOURI.

**Union Mutual Life Insurance Co.,** Portland, Maine.  
The only company writing policies under the Maine non-forfeiture law.

JEF AND BUSINESS DIRECTORY. JEF 459



## CAPITAL CITY PLANING MILLS

HENRY J. WALLAU, PROPRIETOR.

MANUFACTURER OF

MOULDINGS, SASH, DOORS AND BLINDS.

ODD SIZES A SPECIALTY.

Base, Head and Corner Blocks, Stair Builders' Supplies, Newels, solid or built up, Balm-tiers, Stair Rails of all dimensions worked ready to put up. Sawn Balm-tiers and Brackets of all kinds. Contracts taken for all kinds of Buildings in any part of the State. Orders promptly attended to. Send for Prices.

Office, Jefferson St., bet. Main and Water,

JEFFERSON CITY, - - MISSOURI.

## HENRY SCHUMANN, HOUSE PAINTER,

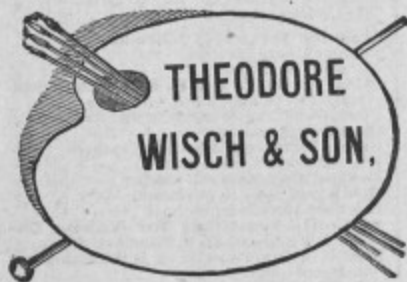
PAPERHANGER and DECORATER.

First-Class Workmanship and  
Best Materials.

Orders solicited and promptly attended to.

201 Madison Street,

JEFFERSON CITY, MISSOURI.



THEODORE  
WISCH & SON,

•• EXPERT ••  
PAINTERS, GLAZIERS,  
Paperhangers and Decorators.

Orders Solicited and Promptly Attended To.

All Work First-Class, and at Moderate Rates.

114 Jefferson Street,

JEFFERSON CITY, - MISSOURI.

P. H. LOETHEN.

T. G. NILGES.

LOETHEN & NILGES,  
ENGINEERS AND CONTRACTORS FOR

## Steam and Hot Water Heating

For Public and Private Buildings. Also dealers in Furnaces and Radiators.

Orders Solicited and Promptly Attended To.

801 JEFFERSON STREET,

JEFFERSON CITY,

MISSOURI.

READ THE ADVERTISEMENT  
On Pages 89-90.

REFLECT UPON ITS  
MERITS AND THEN ACT

# GOOD POSITIONS

Secured by Young Men and Women Graduates of  
**BRYANT & STRATTON BUSINESS COLLEGE, CHICAGO**  
 Business and Shorthand Courses.

# GOOD SALARIES

LARGEST in the WORLD  
 Address, 94 Wabash Ave., CHICAGO.  
 Magnificent Catalogue Free.

Can visit **WORLD'S FAIR GROUNDS SATURDAYS** without interfering with studies.

460

JEF

MISSOURI STATE GAZETTEER

JER

**IRON ROOFS.** SALESROOM, Corner 4th and Market, ST. LOUIS, MO.

**Wallendorf Clement W.**, Deputy Circuit Clerk, Notary Public and Manager W A Dallmeyer's General Insurance Agency; Abstractor of Titles and Conveyancer; Sec for Capital City and Jefferson City Building and Loan Associations and for Jefferson City Brick Co, 900 E High.

Warren Rev (Christian), n w cor Main and Adams.

Watkins Rev J T (Presbyterian), cor Madison and McCarty.

Wells Mrs Laura, dressmaker, 126 E High.

Wengert Helena, dressmaker, 518 E High.

Wentker Rev Joseph (Catholic), Broadway.

**Western Steam Bottling Works.** Wm F Roesen Propr; Mnfr of Iron Phosphate and Full Moon Ginger Ale and all Kinds of Soda and Mineral Waters, Located at Dunklin and Jefferson. (See p 449.)

Western Union Telegraph Co, Robert J Voelker mngr, 216 Madison.

White George T, lawyer, 211 E High.

White J U, supt schools.

Whitney Mrs Mary, boarding house, 213 E Main.

**Wickham Joseph A.**, Adjutant General, Armory Bldg.

Williams Mrs Luellen, asst prof languages Lincoln Institute.

Wilson John L, sewing machs, 222 E High.

**Winslow Arthur**, State Geologist, State Capitol.

Winston Thomas M, abstracts and lawyer, 204 E High.

**Wisch T & Son** (Theodore and Wm), Expert Painters, Paperhangers and Decorators, 114 Jefferson. (See p 459.)

Woshman Henry, grocer, 206 Jefferson.

Wolfe Hermann, aplarist, W High.

**Wolfe L E.**, Supt of Schools, Ex Officio Regent of Lincoln Institute, Capitol Bldg.

Wolferman Louis, clothing, 212 E High.

Wolfum Henry, express, 529 E High.

Wolfum Ulrich, thrasher, e city limits.

**Zevely James W.**, State Librarian, Supreme Court Bldg.

Zuber Joseph L, restaurant, 208 Madison.

**Zuber Victor**, Dealer in and Mnfr of Marble and Granite Monuments and Headstones; also Dealer in Glazed Sewer Pipe, Jefferson adjoining Merchants' Bank Bldg. (See p 457.)

**JEFFRIESBURGH.** A postoffice in Franklin county, 5 miles west of Union, the judicial seat, banking and shipping point. Population, 400. Mail, daily. F. T. Beckmann, postmaster.

Beckmann F T, general store.

Bloom F F, general store.

Everett Augustus, blacksmith.

Michel F, blacksmith.

Schmidt John, shoemaker.

Walde Joseph, blacksmith.

**JENKINS.** A postoffice in Mountain township, Barry county, 15 miles northeast of Cassville, the seat of justice, and the same distance from Aurora, its shipping point. Banking facilities at Cassville and Aurora. Population, 150. Mail, daily. W. F. Galloway, postmaster.

Bailey T S, carpenter.

Baillie W R, carpenter.

Blankinship S P, grist mill.

Boucher J Thomas, U S mail contractor.

Cochran & Wheeler (J J Cochran, G P Wheeler), druggists.

Coruman H O, justice of peace.

Eubanks A L, music teacher.

Fare Crell, wagonmaker.

Galloway A F, notary public.

Galloway A L, insurance.

Galloway A L & W F, live stock.

**Galloway W F, Livery.**

**Galloway & Co** (W F Eubanks, A L and W F Galloway), General Store.

Greenstreet & Balilo, saw and grist mill.

McCubbin D A, stone mason.

Periman Isaac, physician.

Periman J, dentist.

Periman Tillie J, music teacher.

Furdum T A, teacher.

Stockton Peter, constable.

Wheeler G P, physician.

Zinn James, blacksmith.

Zinn W, boots and shoes.

**JENNINGS.** A prettily located village in St. Ferdinand township, St. Louis county, 5 miles northwest of St. Louis, and an equal distance from Clayton, the county seat. It is a station on the St. L. & K. C. and Levee lines of the Wabash R. R. (Huntley Station on the St. L. & K. C. line), and contains 3 churches, a public and 2 private schools. The village is well and favorably known as the seat of the St. Louis Seminary for Young Ladies, conducted by B. T. Blewett, LL. D. The building stands in the midst of a beautiful shaded lawn of 20 acres, surrounded by pure air and abundantly supplied with pure water. The grade of scholarship is high and the instruction thorough. The seminary is chartered, and confers the usual literary degrees. Visitors to the seminary should stop at Woodland Station. A dry plate factory is in operation here and is doing a good business. Population, 800. Tel., W. U. Exp., Pacific. W. T. Clark, postmaster.

**Baseler Henry**, Box Manufacturer.

Baumer Henry, grocer.

Bishop O H, lawyer.

**Blewett B T, LL D.** Prin St. Louis Seminary for Young Ladies. (See opp.)

Clark Wells T, agt Wabash Ry and Pac Exp Co.

Gafer Julius, grocer.

Garber Emma, principal public school.

Hord Charles E, meat market.

McCabe Mrs S H, music teacher.

Middleton James H, physician.

Reickher Julia, select school.

**St. Louis Seminary for Young Ladies.** B T Blewett, LL D, Principal. (See opp.)

Seed M A Dry Plate Co, A R Hulskamp sec and genl mngr.

Seed Wm, photographer.

Tigh Miss Maggie, dressmaker.

Tinkham Joseph N, insurance.

Uilery Edwin, mason.

**JERICO.** Also known as Jerico Springs, is an incorporated city of the 4th class, in Benton township, Cedar county, 16 miles southwest of Stockton, the county seat, 20 from Lockwood, its shipping point, and 275 southwest of St. Louis. It has 5 churches, a public school, a steam flouring mill, a bank, several stores and a weekly paper, the *Jerico Optic*. Stages daily to Lamar, Lockwood and Stockton. Population, 800. Mail, daily. T. N. Woodruff, postmaster.

**Advocate.** G H Brackett editor.

Bath House, J M Black propr.

Black J M, propr Bath House.

Blake Joel, physician.

**Thrasher Hall,** ADJUSTER OF FIRE LOSSES for the ASSURED. ALSO, EXPERT ACCOUNTANT. ROOM 401 TIMES BUILDING, ST. LOUIS, MO.